


॥विद्या परं देवतम्॥

शि.प्र.मं.स्व.तात्यासाहेब महाजन  
कला व वाणिज्य महाविद्यालय  
चिखली  
जि. बुलडाणा - ४४३२०१




S.P.M. Late Tatyasaheb Mahajan  
Arts & Commerce College  
Chikhli  
Dist. Buldana -443201

Shri R.G.Shete  
President

Shri P.P.Bhala  
Secretary

Dr Subhash D. Gawhane  
Principal



**Assessment Years  
2018-19 to 2022-23**

**3<sup>rd</sup> Cycle**

**Assessment & Accreditation by NAAC**

**Criterion - 4**

**Infrastructure and Learning Resources**

<p>शि.प्र.मं.स्व.तात्यासाहेब महाजन कला व वाणिज्य महाविद्यालय चिखली जि. बुलढाना - ४४३२०१ College Code No. : 306 e-mail : spmtmchikhli@gmail.com</p>		<p>S.P.M. Late Tatyasaheb Mahajan Arts &amp; Commerce College Chikhli Dist. Buldana -443201 AISHE : C-43033 www.spmtmchikhli.ac.in</p>
<p>Shri R.G. Shete President</p>	<p>Shri P.P.Bhala Secretary</p>	<p>Dr Subhash D. Gawhane Principal</p>

### Declaration

The Information, Reports, True Copies of the Supporting Documents,  
Numerical Data, etc. furnished in this file is verified by IQAC and found correct.

Hence this Certificate.

Date : 20-11-2023.

Place : CHIKHLI

  
Dr. N. K. GAIKWAD  
IQAC Co-ordinator  
S.P.M. Late Tatyasaheb Mahajan  
Arts & Commerce College,  
CHIKHLI- 443201, Dist. Buldana



  
PRINCIPAL  
S.P.M. Late Tatyasaheb Mahajan  
Arts & Commerce College,  
CHIKHLI- 443201, Dist. Buldana

**शि.प्र.मं.स्व.तात्यासाहेब महाजन**  
**कला व वाणिज्य महाविद्यालय**  
**चिखली जि. बुलडाणा - ४४३२०१**  
 College Code No. : 306  
 e-mail : spmtmchikhli@gmail.com



**S.P.M. Late Tatyasaheb Mahajan**  
**Arts & Commerce College**  
**Chikhli Dist. Buldana -443201**  
 AISHE : C-43033  
 www.spmtmchikhli.ac.in

**Shri R.G.Shete**  
President

**Shri P.P.Bhala**  
Secretary

**Dr Subhash D. Gawhane**  
Principal

**Criterion 4** - Infrastructure and Learning Resources

**Key Indicator** - 4.1 Physical Facilities

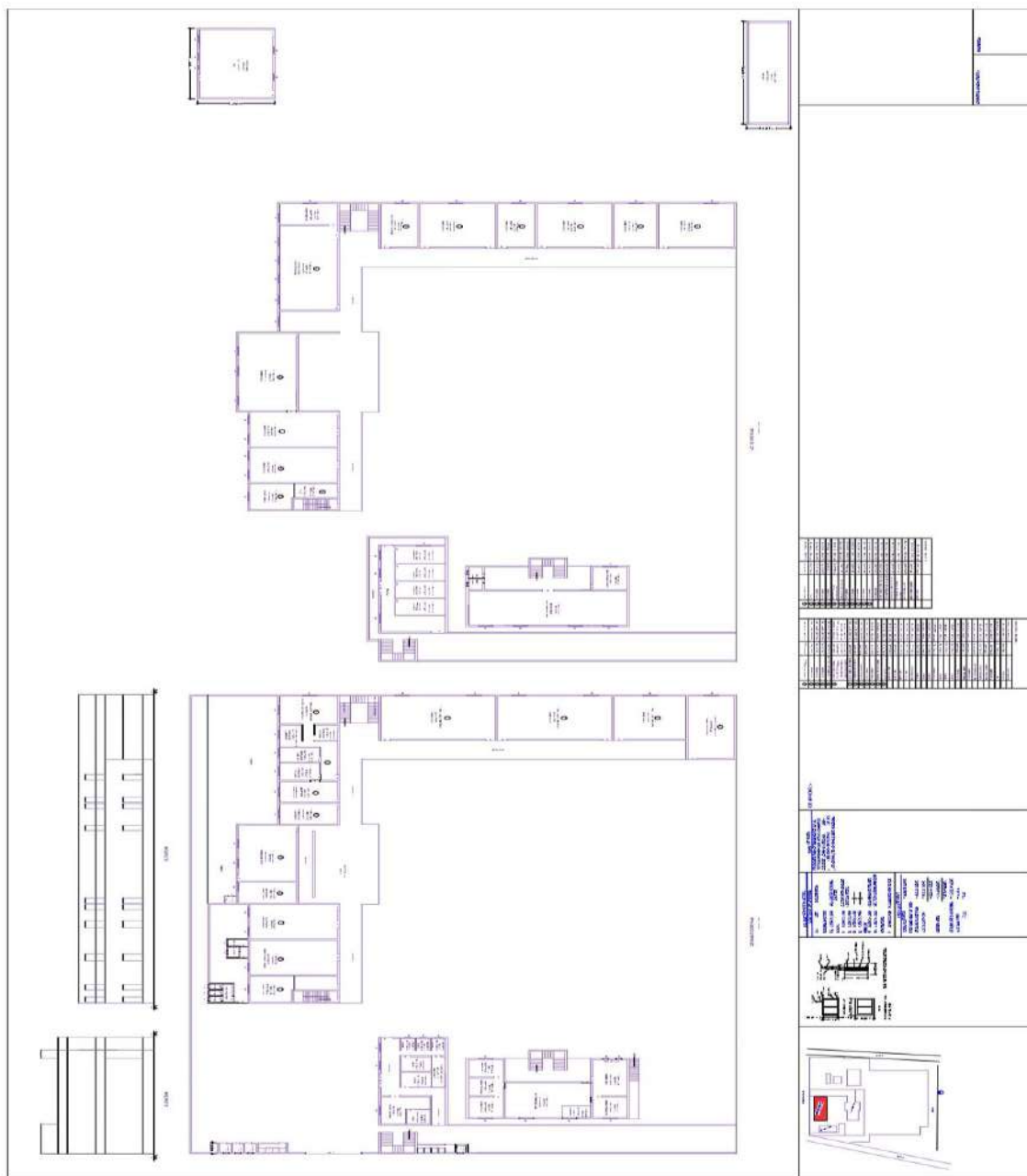
- 4.1.1. QIM** - The Institution has adequate infrastructure and other facilities for
- teaching – learning, viz., classrooms, laboratories, computing equipment etc
  - ICT – enabled facilities such as smart class, LMS etc.

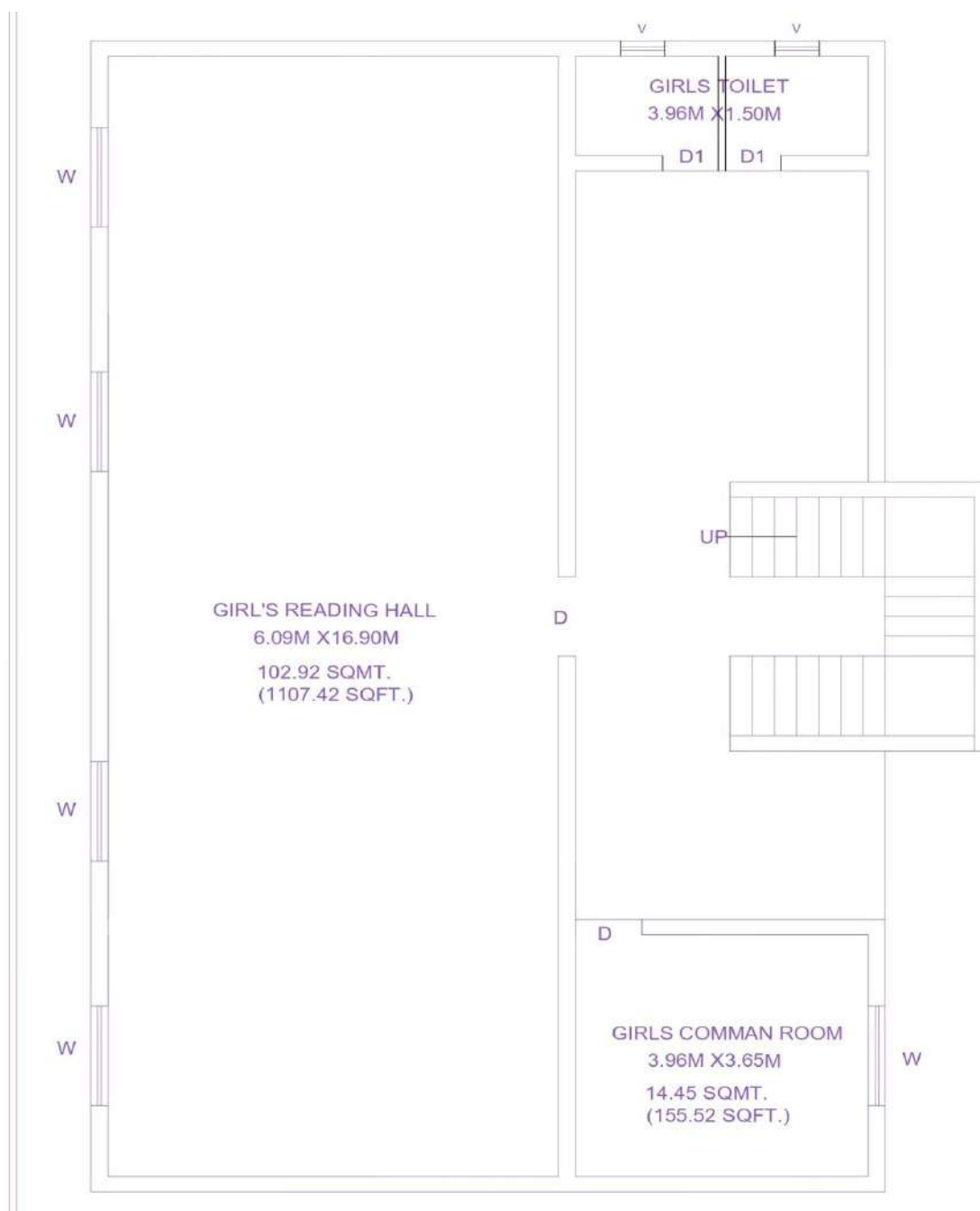
Facilities for Cultural and sports activities, yoga centre, games (indoor and outdoor),  
 Gymnasium, auditorium etc

## **I N D E X**

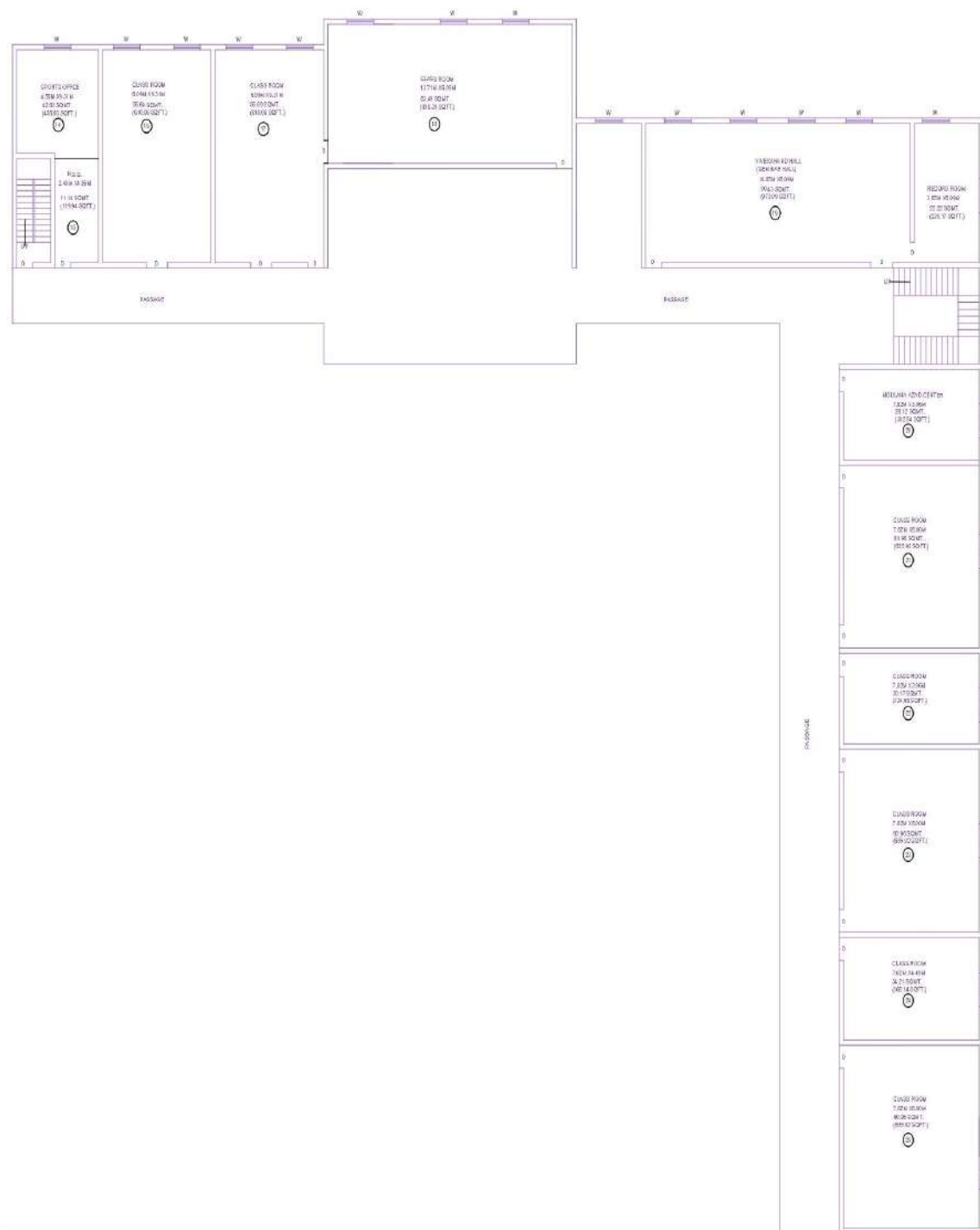
Sr. No	Document	Page No.
1	Self - Declaration	3
2	All Dimension are in Meters	4-8
3	Infrastructures and Physical Facilities Photo Principal Office & IQAC Department	9
4	Marathi Dept., History Dept., English Dept.,	10
5	Political Science Dept., Economics Dept., Commerce Dept., Computer Laboratories	11
6	Sport Dept., Examination Dept., NCC Dept., NSS Dept.,	12
7	Library Dept., Gym	13
8	Administrative Office, Superintendent & Head Clerk Cabin	14
9	Senior Clerk, Junior Clerk, Library Attendance, Cabin	15
10	Peon	16
11	YCMOU Dept., Girls Urinal, Boys Urinal	17
12	Seminar Hall, College Campus,	18
13	Staff Water Filter, Library Water Filter, Students Water Filter	19
14	Girls Common Room, College Rang Munch, Library Ramp	20
15	Fire Extinguisher, First AID Box, CCTV Camera, Staff Urinal	21
16	Teaching Staff Room, Class Room Furniture, Class Room, College Canteen	22
17	College Garden, Class Room Ramp	23

**Blue Print**









1ST. FLOOR PLAN

**शि.प्र.मं.स्व.तात्यासाहेब महाजन  
कला व वाणिज्य महाविद्यालय  
चिखली जि. बुलढाणा - ४४३२०१**  
College Code No. : 306  
e-mail : spmtmchikhli@gmail.com



**S.P.M. Late Tatyasaheb Mahajan  
Arts & Commerce College  
Chikhli Dist. Buldana -443201**  
AISHE : C-43033  
www.spmtmchikhli.ac.in

**Shri R.G.Shete**  
President

**Shri P.P.Bhala**  
Secretary



**Dr Subhash D. Gawhane**  
Principal

①	ENGLISH DEEPARMENT	10.97M X4.87M	53.42 SQMT. (574.84 SQFT.)	①	SPORTS OFFICE	4.58M X9.31M	42.53 SQMT. (458.80 SQFT.)
②	CLASS ROOM	7.62M X7.62M	58.06 SQMT. (624.77 SQFT.)	②	N.S.S.	2.45M X4.55M	11.14 SQMT. (119.94 SQFT.)
③	CLASS ROOM	7.62M X12.19M	92.86 SQMT. (999.47 SQFT.)	③	CLASS ROOM	6.09M X9.31M	56.69 SQMT. (610.06 SQFT.)
④	CLASS ROOM	7.62M X12.19M	92.86 SQMT. (999.47 SQFT.)	④	CLASS ROOM	6.09M X9.31M	56.69 SQMT. (610.06 SQFT.)
⑤	STAF ROOM & MITTING HALL	4.87M X6.09M	29.55 SQMT. (319.12 SQFT.)	⑤	CLASS ROOM	13.71M X6.09M	83.49 SQMT. (898.39 SQFT.)
⑥	MARATHI DEEPARMENT	3.65M X4.26M	17.90 SQMT. (192.80 SQFT.)	⑥	VIVEKANAND HALL (SEMINAR HALL)	14.65M X6.09M	89.43 SQMT. (973.09 SQFT.)
⑦	HISTORY DEEPARMENT	3.65M X6.09M	22.23 SQMT. (239.17 SQFT.)	⑦	MOULANA AZAD CENTER	7.62M X3.96M	30.52 SQMT. (329.54 SQFT.)
⑧	ECONOMY DEEPARMENT	3.65M X2.35M	9.11 SQMT. (98.11 SQFT.)	⑧	CLASS ROOM	7.62M X6.09M	46.39 SQMT. (499.92 SQFT.)
⑨	POLITICAL DEEPARMENT	2.78M X2.35M	6.53 SQMT. (70.29 SQFT.)	⑨	CLASS ROOM	7.62M X3.96M	30.52 SQMT. (329.54 SQFT.)
⑩	N.A.C.C. (IQAC) DEEPARMENT	3.65M X6.09M	22.23 SQMT. (239.17 SQFT.)	⑩	CLASS ROOM	7.62M X6.09M	46.39 SQMT. (499.92 SQFT.)
⑪	COMMERCE DEEPARMENT	3.65M X6.09M	22.23 SQMT. (239.17 SQFT.)	⑪	CLASS ROOM	7.62M X3.96M	30.52 SQMT. (329.54 SQFT.)
⑫	EXAM DEEPARMENT	9.83M X6.09M	59.86 SQMT. (644.14 SQFT.)	⑫	CLASS ROOM	7.62M X6.09M	46.39 SQMT. (499.92 SQFT.)
⑬	GUEST ROOM	3.65M X6.09M	22.23 SQMT. (239.17 SQFT.)	⑬	RECORD ROOM	3.65M X6.09M	22.22 SQMT. (239.17 SQFT.)
⑭	YCMOU ROOM	6.09M X9.31M	56.69 SQMT. (610.06 SQFT.)	⑭	MARATHI RESEARCH CENTER	3.65M X5.35M	19.51 SQMT. (210.57 SQFT.)
⑮	COMPUTER CLASS ROOM	6.09M X9.31M	56.69 SQMT. (610.06 SQFT.)	⑮	HISTORY RESEARCH CENTER	3.65M X5.35M	19.51 SQMT. (210.57 SQFT.)
⑯	N.C.C. OFFICE	4.58M X4.53M	20.74 SQMT. (223.24 SQFT.)	⑯	B.E.C.D. RESEARCH CENTER	3.65M X5.35M	19.51 SQMT. (210.57 SQFT.)
⑰	GIRL'S BATH RM.	3.54M X2.63M	10.00 SQMT. (107.60 SQFT.)	⑰	ECONOMICS RESEARCH CENTER	3.65M X5.35M	19.51 SQMT. (210.57 SQFT.)
⑱	GIRL'S TOILET	3.54M X2.63M	10.00 SQMT. (107.60 SQFT.)	⑱	GIRL'S READING HALL	6.09M X16.90M	102.92 SQMT. (1107.42 SQFT.)
⑲	BOY'S TOILET	2.00M X7.62M	15.00 SQMT. (161.40 SQFT.)	⑲	GIRL'S COMMON ROOM	3.96M X3.65M	14.45 SQMT. (155.92 SQFT.)
⑳	STAF TOILET	2.00M X7.62M	15.00 SQMT. (161.40 SQFT.)	㉑	GIRL'S TOILET	3.96M X1.50M	5.94 SQMT. (63.91 SQFT.)
㉑	PRINCIPLE OFFICE	4.75M X5.25M	24.93 SQMT. (268.32 SQFT.)				827.22 SQMT. (8900.88 SQFT.)
㉒	CABIN	2.50M X2.50M	6.50 SQMT. (69.96 SQFT.)				
㉓	OFFICE	2.50M X4.70M	11.88 SQMT. (128.95 SQFT.)				
㉔	OFFICE	2.55M X4.70M	11.98 SQMT. (128.95 SQFT.)				
㉕	STOCK ROOM	5.33M X1.50M	8.00 SQMT. (86.08 SQFT.)				
㉖	OFFICE	2.10M X1.50M	3.15 SQMT. (33.89 SQFT.)				
㉗	OFFICE	2.10M X1.50M	3.15 SQMT. (33.89 SQFT.)				
㉘	OFFICE	2.10M X1.50M	3.15 SQMT. (33.89 SQFT.)				
㉙	CLASS ROOM	3.65M X3.65M	13.32 SQMT. (143.32 SQFT.)				
㉚	CROSSING ROOM	3.12M X3.65M	11.38 SQMT. (122.53 SQFT.)				
㉛	STOCK ROOM	3.65M X3.65M	13.32 SQMT. (143.32 SQFT.)				
㉜	BOY'S READING HALL	6.09M X9.14M	55.82 SQMT. (602.03 SQFT.)				
㉝	LIBRARIAN CABIN	2.10M X3.05M	6.40 SQMT. (68.91 SQFT.)				
㉞	REFERENCE ROOM	3.65M X3.65M	13.32 SQMT. (143.32 SQFT.)				
㉟	STOCK ROOM	6.40M X3.65M	23.36 SQMT. (251.33 SQFT.)				
㊱	GIM	12.00M X7.77M	93.24 SQMT. (1003.26 SQFT.)				
㊲	CANTING	17.88M X4.26M	75.31 SQMT. (810.46 SQFT.)				
㊳	GARDEN AREA		211.00 SQMT. (2270.36 SQFT.)				
1208.98 SQMT. (13054.22 SQFT.)							

**Dr. N. K. GAIKWAD**  
IQAC Co-ordinator  
S.P.M. Late Tatyasaheb Mahajan  
Arts & Commerce College,  
CHIKHLI- 443201, Dist. Buldana



**PRINCIPAL**  
S.P.M. Late Tatyasaheb Mahajan  
Arts & Commerce College,  
CHIKHLI- 443201, Dist. Buldana



**शि.प्र.मं.स्व.तात्यासाहेब महाजन  
कला व वाणिज्य महाविद्यालय  
चिखली जि. बुलडाणा - ४४३२०१**  
College Code No. : 306  
e-mail : spmtmchikhli@gmail.com



**S.P.M. Late Tatyasaheb Mahajan  
Arts & Commerce College  
Chikhli Dist. Buldana -443201**  
AISHE : C-43033  
www.spmtmchikhli.ac.in

**Shri R.G.Shete**  
President

**Shri P.P.Bhala**  
Secretary

**Dr Subhash D. Gawhane**  
Principal

### 4.1.1 Measurement of Infrastructure and Physical Facilities

ALL DIMENSION ARE IN METRES			NAME OF WORK
SCHEDULE OF OPENING			
S.Y.	SIZE	DESCRIPTION	PROPOSED PLAN OF BUILDING FOR S.P.M. TATYASAHEB MAHAJAN ARTS & COMMERCE COLLEGE , CHIKHLI ( REG. NO. , MAH / / / BULDANA ) IN PLOT NO. , SR. NO. , AT.-CHIKHLI, TQ.-CHIKHALI, DIST.- BULDANA.
ROLLING SHUTTER			
R.S.	3.00M X 2.60M	M.S. GLAZED ROLLING SHUTTER	
DOORS			
D	0.90M X 2.10M	C.C.T.W. WITH SINGSL	
D1	1.20M X 2.40M	LEAF SHUTTERS	
D2	0.75M X 2.10M	—    —	
D3	1.00M X 2.40M	—    —	
WINDOW			
W	0.90M X 1.50M	ALLUMINIUM EXTRUDED	
W1	1.20M X 1.50M	SECTION SLIDING WINDOW	
VENTILATORS			
V	0.45M X 0.45M	M.S. GLAZED VENTIATOR	
AREA STATEMENT			
TOTAL PLOT AREA		= 16208.78 SQMT.	
PROPOSED BULT UP AREA			
GROUND FLOOR PLAN		= 1832.22 SQMT.	
1ST. FLOOR PLAN		= 1832.22 SQMT.	
		= 3664.44 SQMT.	
GARDEN AREA		= 211.00 SQMT.	
		= 3875.44SQMT.	
GRAUND AREA & PARKING		= 12333.34 SQMT.	
% OF B/UP AREA		= 11.30 %	
F.S.I.		= 0.22	



**Dr. N. K. GAIKWAD**  
IQAC Co-ordinator  
S.P.M. Late Tatyasaheb Mahajan  
Arts & Commerce College,  
CHIKHLI- 443201, Dist. Buldana




**PRINCIPAL**  
S.P.M. Late Tatyasaheb Mahajan  
Arts & Commerce College,  
CHIKHLI- 443201, Dist. Buldana



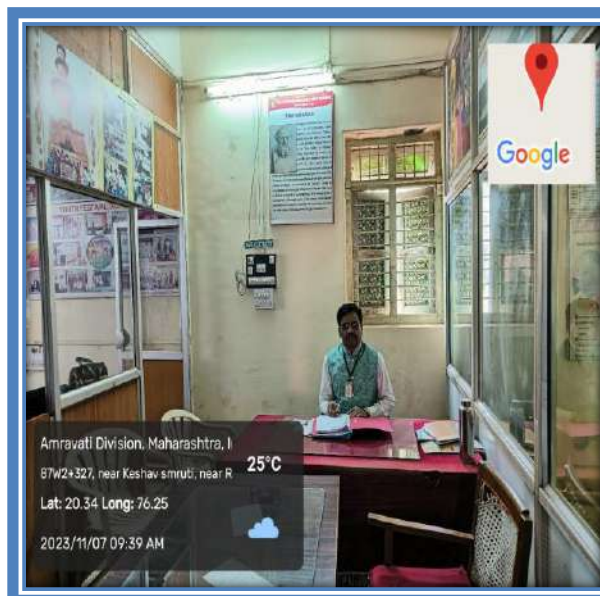


### Infrastructure and Physical Facilities Photos



### Principal Office

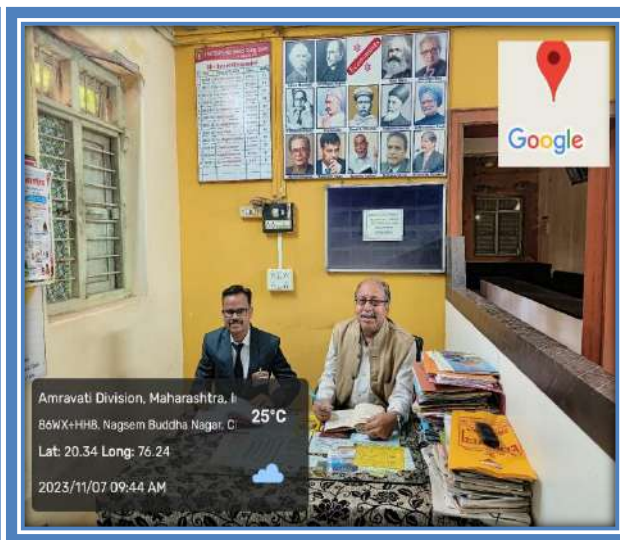


**IQAC Department****Marathi Department****History Department****English Department**





**Political Science Department**



**Economics Department**



**Commerce Department**



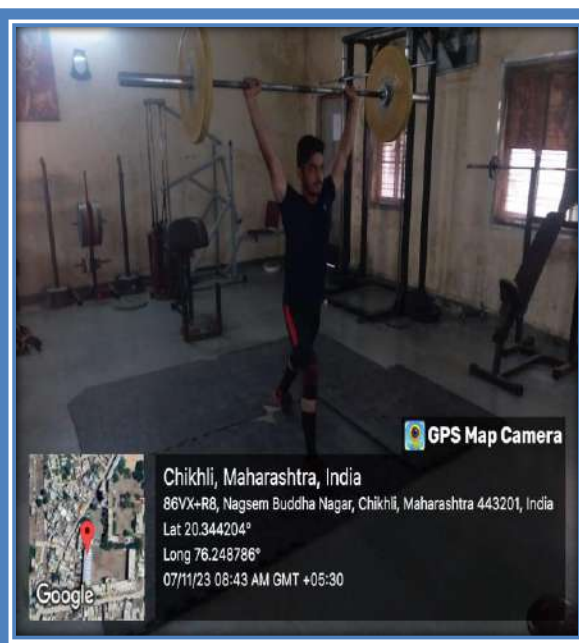
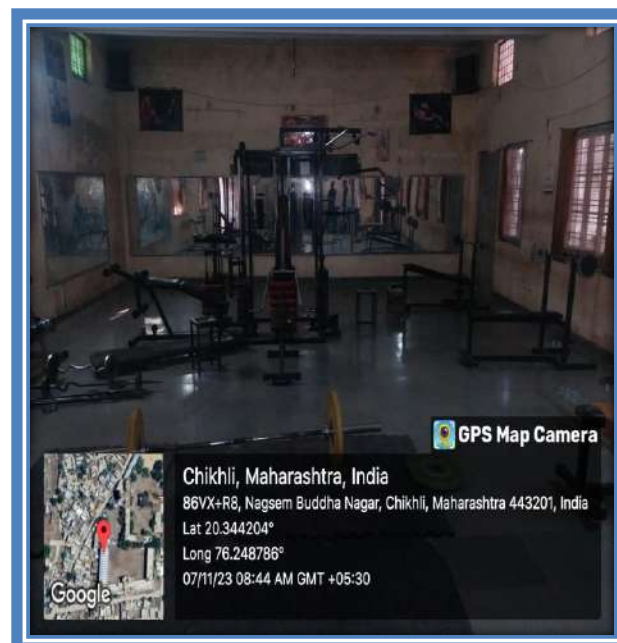
**Computer Lab.**

Sports DepartmentExamination DepartmentNCC DepartmentNSS Department





### Library Department



### Gym Department

Administrative OfficeSuperintendentHead Clerk





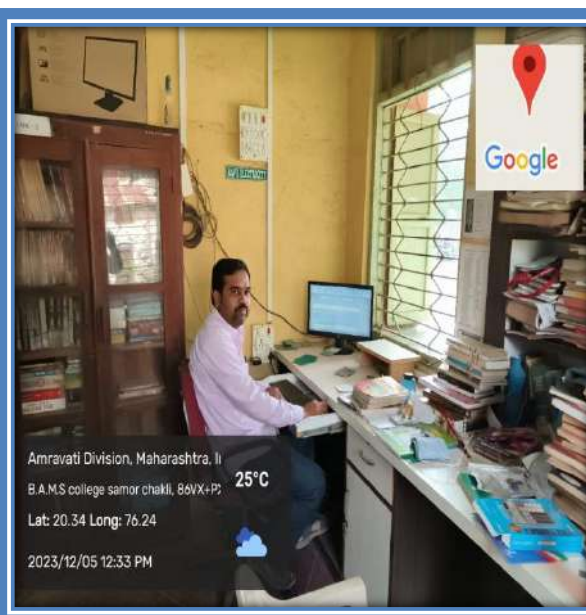
Senior Clerk



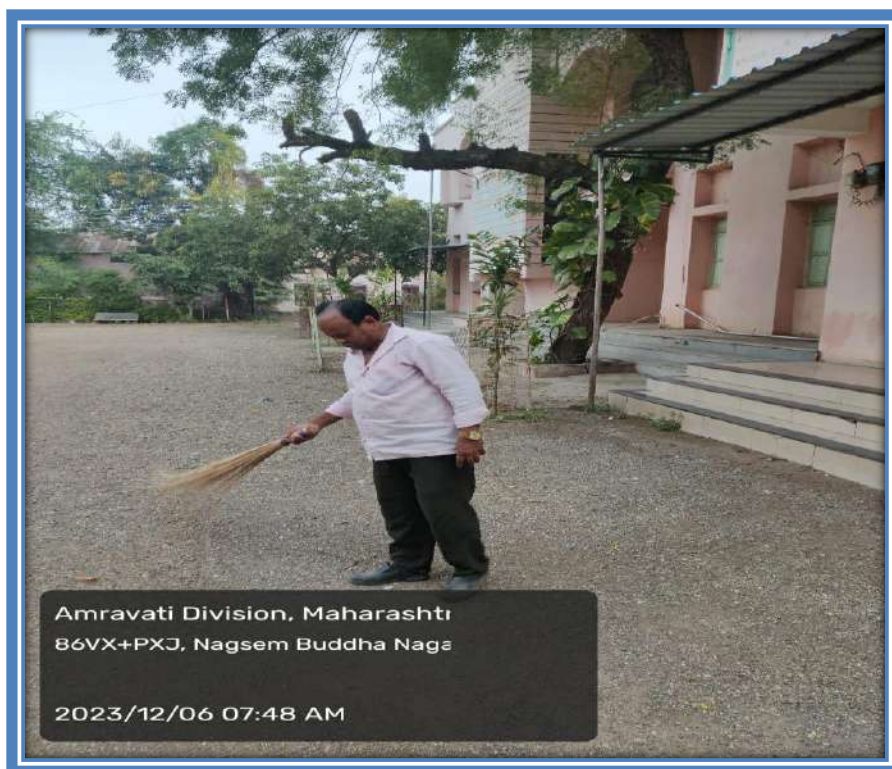
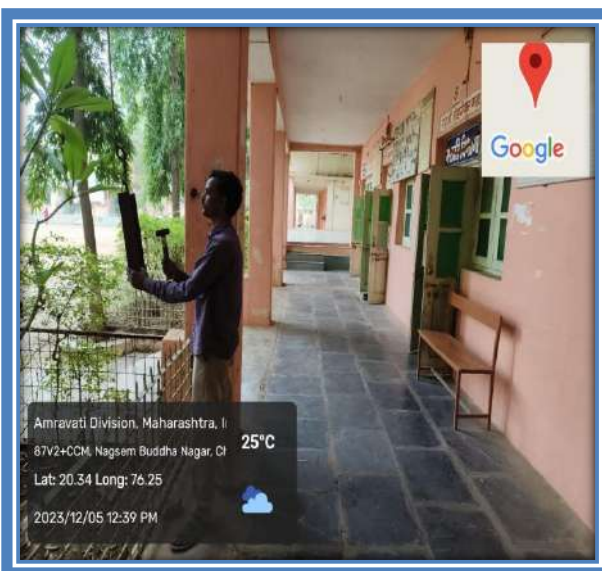
Junior Clerk



Junior Clerk

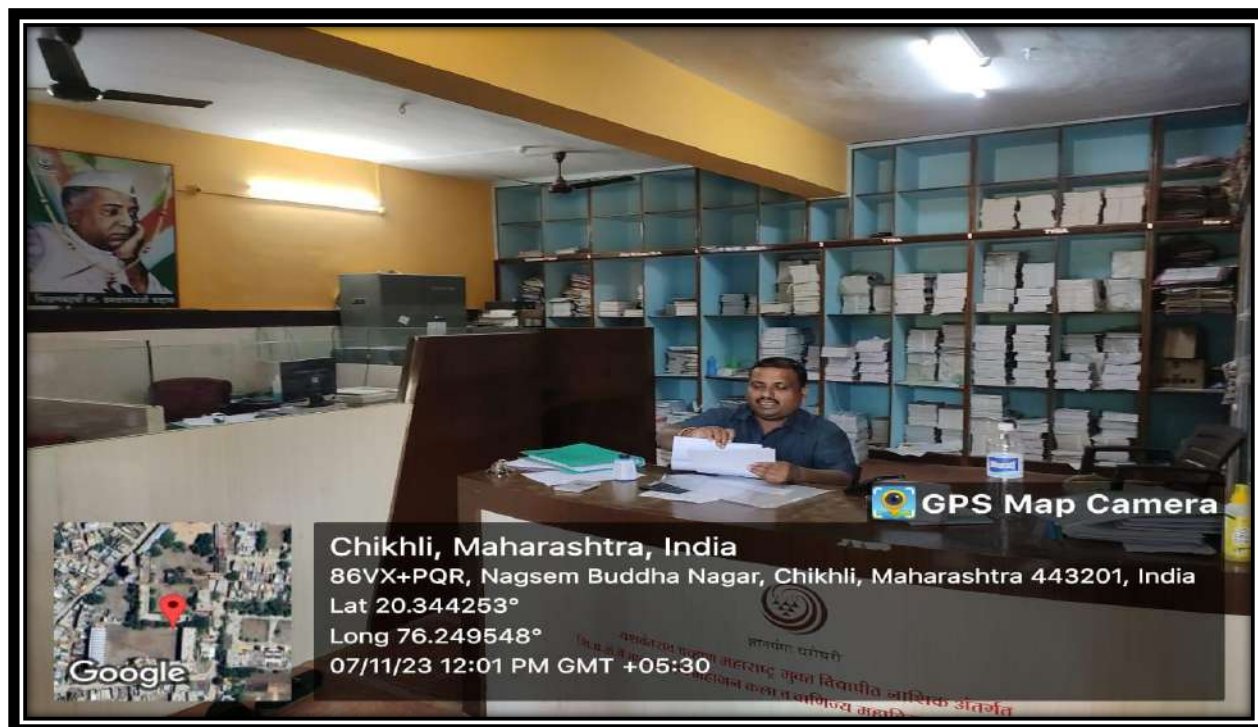


Library Attendance



Peon





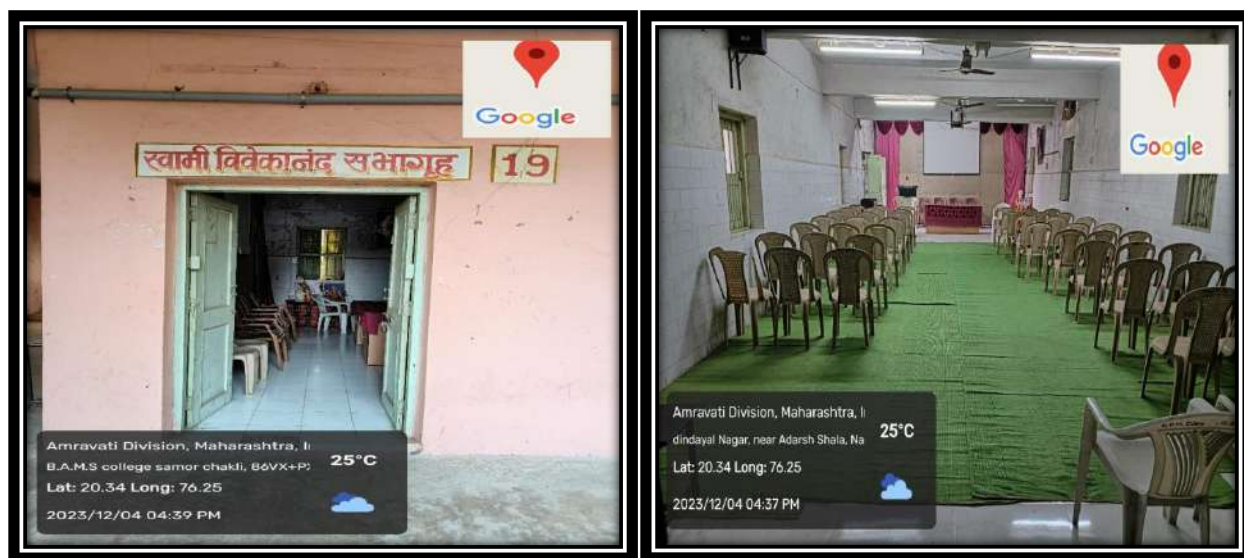
YCMOU Department



Girls Urinal



Boys Urinal



Seminar Hall



College Campus

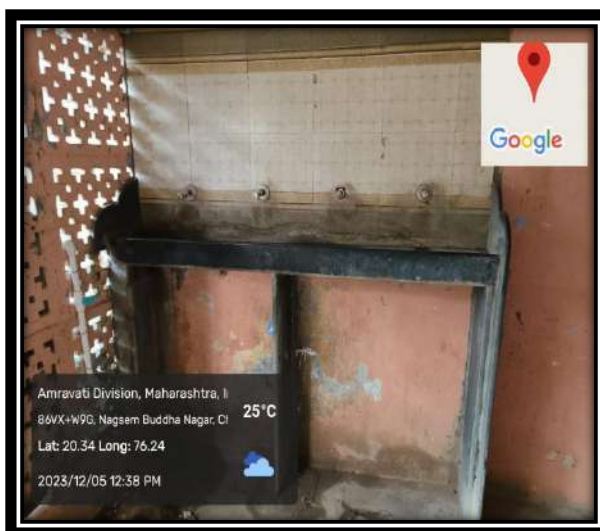
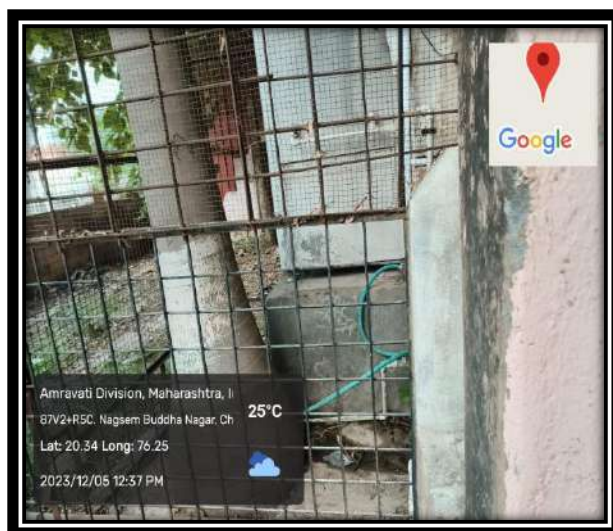




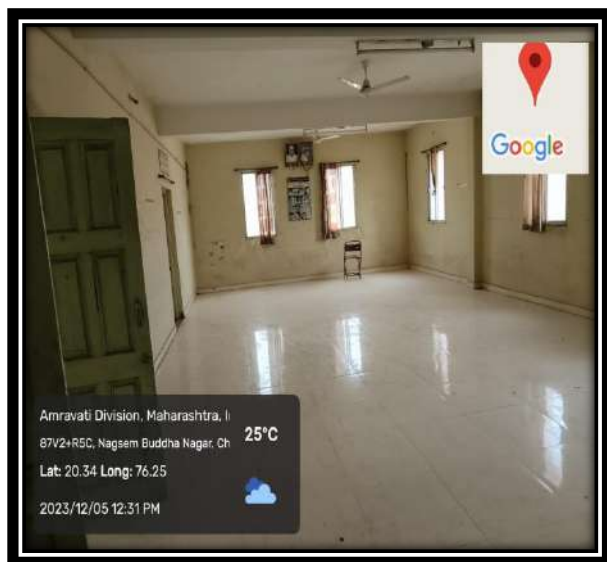
Staff Water Filter



Library Water Filter



Students Water Filter



**Girls Common Room**



**College Rangmunch**



**Library Ramp**



**Office Ramp**

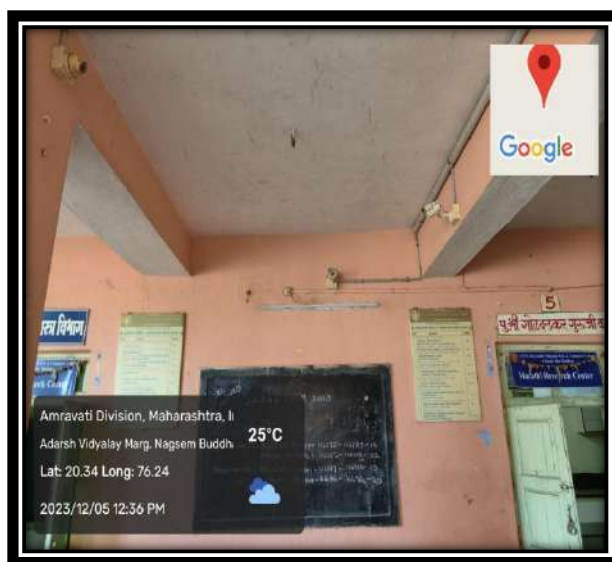




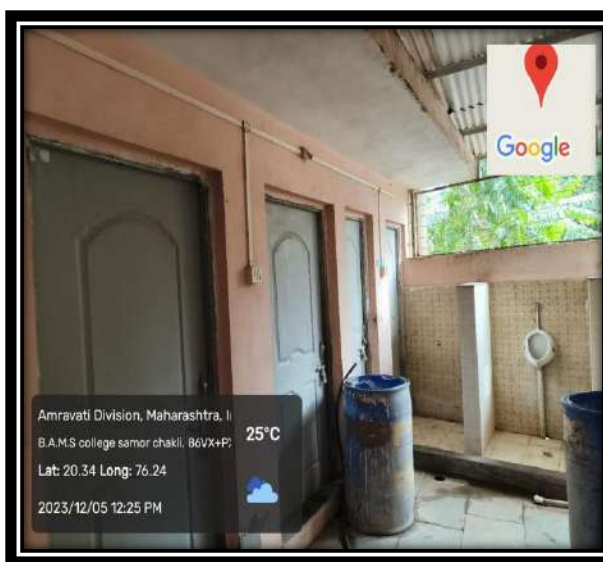
Fire Exstinguisher



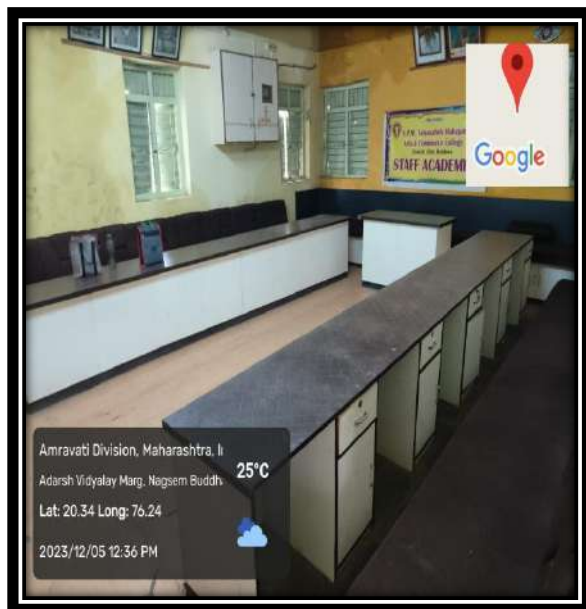
First AID Box



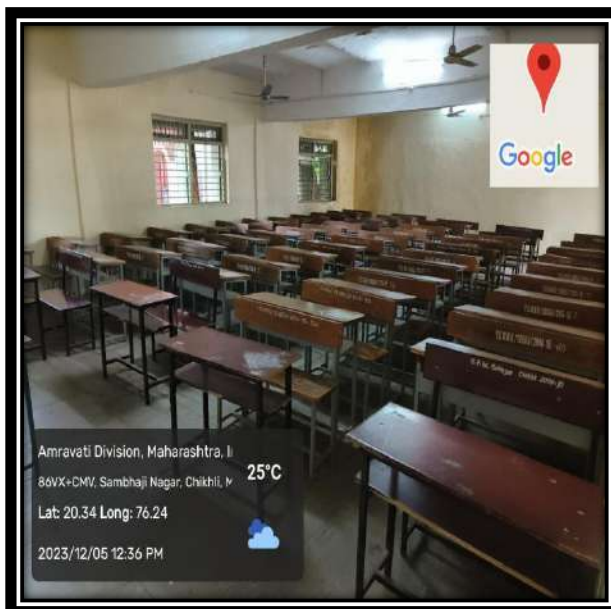
CCTV Camere



Staff Urinal



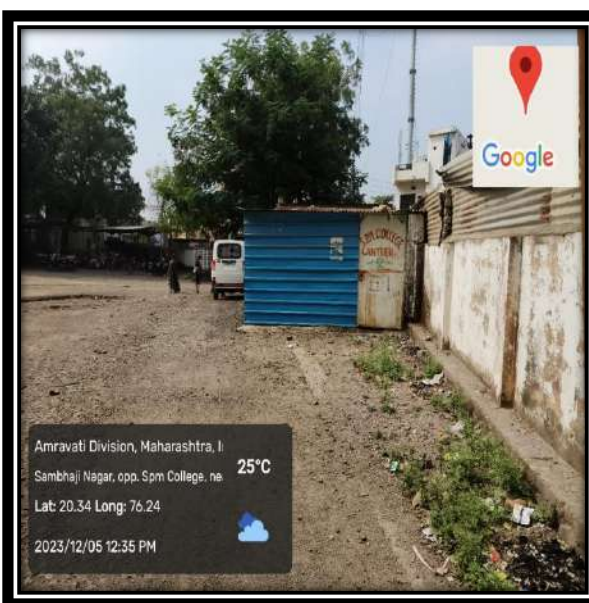
Teaching Staff Room



Class Room Furniture

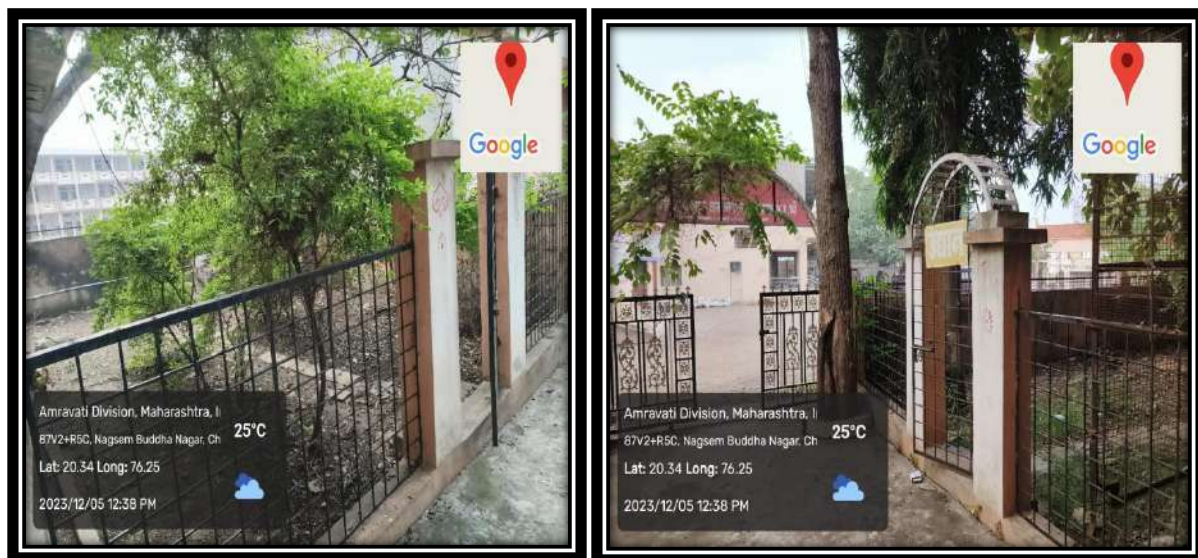


Class Room



College Cantine





College Gardun



Class Room Ramp